

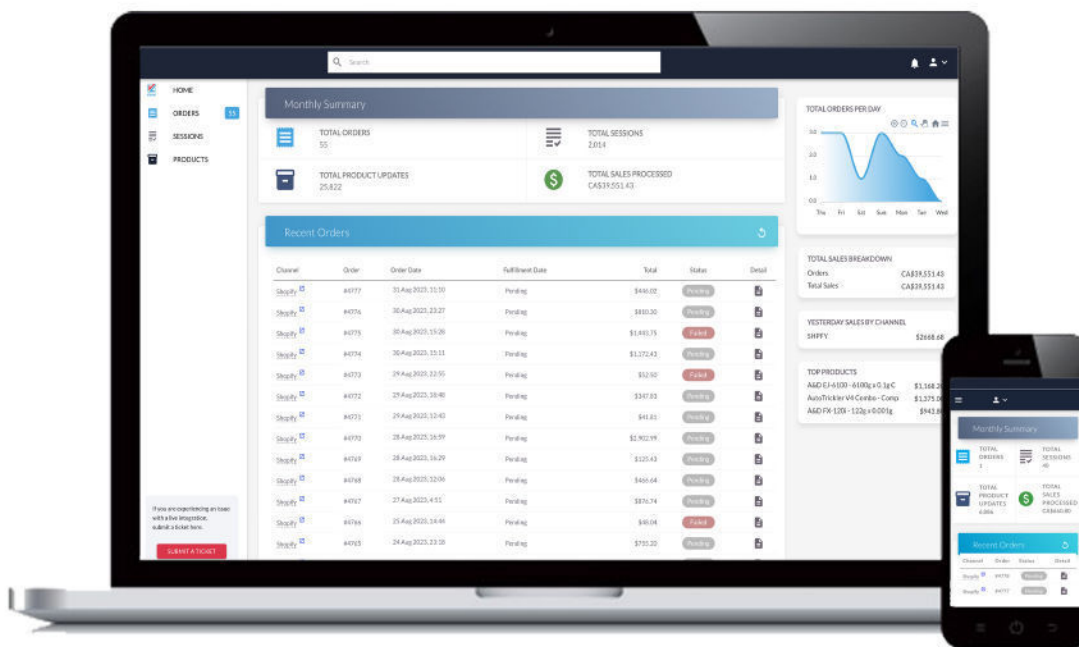
WELCOME TO THE VL OMNI DASHBOARD

Transforming Data, Connecting Business

VL OMNI is an integration platform partner for real-time, agile, and scalable iPaaS data integration. We empower businesses to accelerate growth by integrating their systems, channels, partners, and applications together based on their needs. Top global brands trust us to move data seamlessly through their infrastructure as they grow and accelerate their business.

What is the VL OMNI Dashboard?

The VL OMNI Dashboard, available to all VL OMNI iPaaS customers, provides business intelligence on the performance of all your channels, trading partners, and satellite applications integrated by VL OMNI. More than just a single point of access for your integrations, the Dashboard is an administrative hub that allows your team to view invoices, pay bills, and view support links all in one place. The VL OMNI Dashboard is a customer experience destination for all VL OMNI customers that provides full channel visibility and central point of access for your team to your integrations.



Dashboard Features

- ▶ View Transactions, Sessions, and Product Updates
- ▶ View workflow schedules and the last time they ran
- ▶ View Channel and Transaction activity
- ▶ View and sort orders by fulfillment status
- ▶ Key alerts and notifications on performance
- ▶ Download data as CSV, JSON or XML
- ▶ View important messages, as well as daily reports
- ▶ View/Download Billing Information and pay invoices
- ▶ Access to support ticket hub
- ▶ Error reporting*

The Impact of the Dashboard

The VL OMNI Dashboard allows our customers to be able to view and analyze real-time data of their sales channels including, orders, fulfillments, products, and revenue from all active sales channels in a single unified view.

By using VL OMNI, our customers are no longer left with having to manually aggregate and unify their own data, but instead can have an accurate, holistic view of all their sales channels in this single portal.

